



GRAY TOOLS

PROUDLY CANADIAN  FIÈREMENT CANADIEN



Offers Expires May 31, 2019

Professional Tools Special Winter 2019

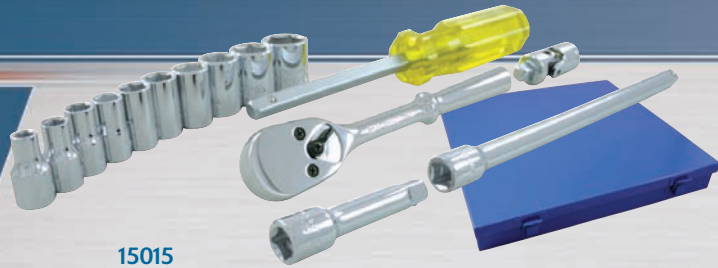
*1% of net proceeds from product sales from this flyer
will be donated to **Prostate Cancer Canada**.

Together We Are Stronger



Gray Chrome Sockets

- Mirror chrome finish for maximum resistance against corrosion.
- Made from premium tool steel for maximum durability.
- Ideal for use on stubborn, damaged or worn fasteners.
- Hex openings deliver maximum turning power without rounding fasteners.

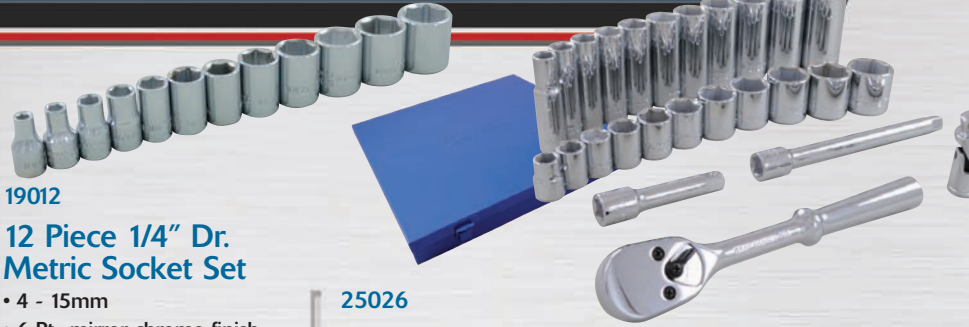


15015 15 Piece 1/4" Dr. 6 Point Standard SAE Socket & Attachment Set

- 3/16", 7/32", 1/4", 9/32", 5/16", 11/32", 3/8", 7/16", 1/2", 9/16"
- Reversible Ratchet
- 2" & 6" Extension
- U-Joint
- Hand Driver

List \$271.53

\$174⁹⁵



19012 12 Piece 1/4" Dr. Metric Socket Set

- 4 - 15mm
- 6 Pt., mirror chrome finish with socket bar

List \$115.27

\$79⁹⁵

25026

26 Piece 3/8" Dr. SAE Socket & Attachment Set

- Reg. 3/8" - 1"
- Deep 3/8" - 1"
- 6 Pt. Chrome sockets
- Ratchet
- U-Joint
- 3" & 6" Extension

List \$491.33

\$333⁹⁵

25407

7 Piece 3/8" Dr. SAE Socket Set

- 1/4" - 5/8"
- 8 Pt., mirror chrome finish with socket bar

List \$94.19

\$53⁹⁵



25012 11 Piece 3/8" Dr. Standard SAE Socket Set

- 1/4" - 7/8"
- 6 Pt., mirror chrome finish with socket bar

List \$107.50

\$69⁹⁵



29211

11 Piece 3/8" Dr. Metric Deep Socket Set

- 9-19mm
- 6 Pt., mirror chrome finish with socket bar

List \$150.08

\$102⁹⁵

25620

10 Piece 3/8" & 1/2" Dr. SAE Hex Head Socket Set

- 3/8" Dr. - 1/8" - 3/8"
- 1/2" Dr. - 1/2" - 5/8"

- Includes socket bar

List \$226.61

\$144⁹⁵



38020 20 Piece 1/2" Dr. SAE Socket & Attachment Set

- Reg. 3/8" - 1 1/4"
- 6 Pt. Chrome Sockets
- Ratchet
- Flex Handle
- U-Joint
- 5" & 10" Extension

List \$578.94

\$347⁹⁵



35607

7 Piece 1/2" Dr. SAE Hex Head Socket Set

- 5/16" - 3/4"
- Mirror chrome finish with socket bar

List \$248.99

\$131⁹⁵



35616

6 Piece 1/2" Dr. SAE Hex Head Socket Set

- 1/4" - 9/16"
- Extra long bits
- Includes socket bar

List \$200.08

\$102⁹⁵



XH25

24 Piece 1" Dr. 12 Point Standard SAE Socket Set

- Reg. 1 7/16" - 3"
- 12 Pt. Chrome Sockets
- Reversible Ratchet
- Sliding T-Handle
- Flex Handle
- 8" & 17" Extension
- Adapter 3/4" Female, 1" Male

List \$3,912.14

\$1,954⁹⁵



Gray Impact Sockets

- Hex openings deliver maximum turning power without rounding fasteners.
- Made of premium tool steel and precision heat-treated for maximum durability.
- Limited lifetime warranty.
- Meet or exceed ANSI standards.



25058 8 Piece 3/8" Dr. Deep SAE Impact Socket Set

- 5/16" - 3/4"
- 6 Pt., Industrial black finish includes socket bar

List \$97.08
\$62⁹⁵



39117 17 Piece 1/2" Dr. Metric Impact Socket Set

- 10 - 24, 30, 32mm
- 12 Pt., Industrial black finish includes socket bar

List \$261.73
\$177⁹⁵



35910 10 Piece 1/2" Dr. Deep SAE Impact Universal Joint Socket Set

- 3/8", 7/16", 1/2", 9/16", 5/8", 11/16", 3/4", 13/16", 7/8", 15/16"
- 6 Pt., Industrial black finish includes socket bar

List \$465.05
\$298⁹⁵



45805 5 Piece 3/4" Dr. SAE Impact Hex Head Socket Set

- 9/16", 5/8", 3/4", 7/8", 1"
- Precision tip ensures a tight and secure fit with the fastener
- Industrial black finish includes socket bar

List \$362.13
\$181⁹⁵



PL11T 11 Piece 1/2" Dr. SAE Deep Impact Socket Set

- 3/8" - 1"
- 6 Pt., Industrial black finish includes socket bar

List \$212.89
\$119⁹⁵



24510 10 Piece Female Torx® Socket Set

- Contains: 1/4" Drive: E4, E5, E6, E7, E8
3/8" Drive: E10, E12, E14, E16
1/2" Drive: E18
- Industrial black finish includes socket bar

List \$126.76
\$72⁹⁵



P6-107 shown

Impact Extensions - Black Finish

	Female	Male	Length	List	
P2-103A	3/8"	3/8"	3"	\$19.47	\$12⁹⁵
P2-106A	3/8"	3/8"	6"	\$24.60	\$15⁹⁵
P4-105A	1/2"	1/2"	5"	\$24.31	\$15⁹⁵
P4-110A	1/2"	1/2"	10"	\$30.84	\$19⁹⁵
P6-107	3/4"	3/4"	7"	\$70.43	\$45⁹⁵
P6-110	3/4"	3/4"	10"	\$83.07	\$53⁹⁵
P6-113	3/4"	3/4"	13"	\$86.82	\$55⁹⁵
P5406	1"	1"	7"	\$115.54	\$74⁹⁵
P5410	1"	1"	10"	\$139.76	\$89⁹⁵
P5413	1"	1"	13"	\$178.56	\$114⁹⁵
P8-108	1 1/2"	1 1/2"	8"	\$719.00	\$462⁹⁵



39214 14 Piece 1/2" Dr. Deep Metric Impact Socket Set

- 10 - 23mm
- 6 Pt., Industrial black finish includes socket bar

List \$277.89
\$178⁹⁵



45260 10 Piece 3/4" Dr. SAE Deep Impact Socket Set

- 15/16" - 1 5/8"
- 6 Pt., Industrial black finish includes socket bars

List \$543.33
\$271⁹⁵



PA4-6 shown



PA7-6 shown



PA6-4 shown

Adapters - Impact

	Overall Length	Female	Male	List	
PA2-4A	1 3/8"	3/8"	1/2"	\$17.65	\$11⁹⁵
PA4-6	1 7/8"	1/2"	3/4"	\$32.80	\$21⁹⁵
PA4-2A	1 1/2"	1/2"	3/8"	\$18.02	\$11⁹⁵
PA6-4	2 3/16"	3/4"	1/2"	\$45.03	\$28⁹⁵
PA6-7	2 9/16"	3/4"	1"	\$39.94	\$25⁹⁵
PA7-6	2 7/8"	1"	3/4"	\$59.17	\$38⁹⁵
PA7-8	3 1/4"	1"	1 1/2"	\$116.92	\$75⁹⁵

Prostate cancer is the most common cancer to affect Canadian men. One in seven men will be diagnosed with the disease in their lifetime.

What is prostate cancer?



NEW

941004

Mobile Tool Chest with 4 Drawers – Industrial Version

- 22⁷/₈" (w) x 15" (d) x 17¹⁵/₁₆" (h).
- Engineered for users whose work requires they transport hand tools, power tools and other repair components to the worksite.
- Made of robust injection molded Copolymer Polypropylene, making it extremely durable and resistant to impact, rough usage, harsh weather.
- The upper compartment contains a removable tray.
- Below the removable tray is a recessed area where 5 small component boxes, a laptop computer or tablet can be stored.
- The chest's main compartment is covered by a locking and removable drop front door that provides unrestricted access to the drawers.
- Both top and drop front door can easily be removed.
- Modular design allows tool chests to be fully stacked for easy storage.
- Two side handles and a telescoping rear handle (extends up to 39"/99 cm) for convenient lifting and transportation.
- Accommodates any commercially available padlock or TSA compliant model.
- Front flat key lock locks both the top and front doors.
- Four silent and self-oiling wheels are mounted at the rear of the tool chest.
- Each mobile top chest includes:
 - Removable top tray (for upper compartment).
 - 5 plastic storage component organizers (can be stored either beneath the upper tray or inside a drawer).
 - 18¹/₄" (w) x 9⁷/₈" (d) x 1³/₁₆" (h) drawer (1).
 - 18¹/₄" (w) x 9⁷/₈" (d) x 2¹/₈" (h) drawer (2).
 - 18¹/₄" (w) x 9⁷/₈" (d) x 3¹/₁₆" (h) drawer (1).
 - 2 Locking keys.

List \$708.55

\$628⁹⁵

Discover more by searching "Gray Mobile Tool Chest" on YouTube



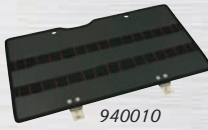
940006*



940007*



940008*



940010



940011*



940012



940013

Optional Drawer and Top Lid Panels for Mobile Tool Chest

Part Number	Description	List	Price	Part Number	Description	List	Price
940006	Low drawer panel	\$47.22	\$41⁹⁵	940011	Lid panel stores tools facing inward with elastics	\$43.54	\$38⁹⁵
940007	Mid drawer panel	\$49.14	\$43⁹⁵	940012	Lid panel with tablet storage stores contents facing inward	\$70.43	\$62⁹⁵
940008	Tall drawer panel	\$51.21	\$44⁹⁵	940013	Lid panel with 9 pouches stores tools facing inward	\$62.75	\$54⁹⁵
940010	Lid panel stores tools facing inward with elastics	\$62.75	\$54⁹⁵				

*Tools not included.

97502B

2 Drawer Utility Cart

- 30¹/₄" x 19" x 35³/₄"
- Roller bearing slides and safety latches

List \$779.93

\$467⁹⁵



90005-PAK

Rack with 4 Compartment Boxes

- 20¹/₂" x 12¹/₂" x 14⁵/₈"

List \$545.75

\$327⁹⁵

PR-23E

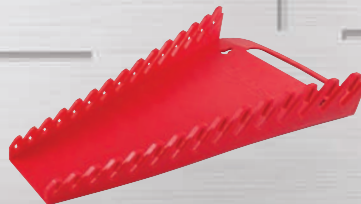
23" Plastic Hand Box

- 23" x 10¹/₂" x 11"
- Capacity: 2,657 cu. in.

\$46⁹⁵ ea.



*Tools not included.



Gripper Wrench Organizers

Part Number	Description	List	Price
94809	Holds 9 wrenches	\$22.17	\$14⁹⁵
94811	Holds 11 wrenches	\$26.03	\$16⁹⁵
94815	Holds 15 wrenches	\$31.77	\$16⁹⁵

Pro+ Series Toolbox Features:

- 100 lbs bearing slides on all drawers.
- Completely redesigned locking system with tubular key and steel double hook engagement mechanism.
- Smooth and quiet rolling premium 5" x 2" casters with precision sealed bearings and 360° top brake.
- New see-through design allows quicker visual and physical access to tools in the top lid cavity (42" model top chests only).
- Heavy-duty 18 gauge steel frame for superior durability.
- Drawer liners included on all models.
- Scratch and corrosion resistant powder coat paint finish.
- Pre-installed casters on all 42" wide roller cabinets making it faster to go from unboxing to working.
- Redesigned side handle that makes moving roller cabinets easier and more comfortable.



93119
9 Drawer Top Chest - PRO+ Series

- 41½" x 18½" x 23½"
- Capacity: 10,841 cu. in.

List \$1,391.85
\$889⁹⁵



93109
9 Drawer Top Chest PRO+ Series

- 26" x 18¾" x 21"
- Capacity: 7,130 cu. in.

List \$797.42
\$504⁹⁵

Professional Tools Special



93503
3 Drawer Intermediate Chest - PRO+ Series

- 26" x 19" x 13½"
- Capacity: 3,047 cu. in.

List \$463.19
\$293⁹⁵



93212
12 Drawer Roller Cabinet PRO+ Series

- 42" x 19" x 43½"
- Capacity: 17,798 cu. in.

List \$1,945.44
\$1,244⁹⁵



93211
11 Drawer Roller Cabinet PRO+ Series

- 26½" x 19" x 42"
- Capacity: 11,307 cu. in.

List \$1,291.58
\$817⁹⁵

99808SB

8 Drawer Top Chest Marquis Series

- 26" x 16" x 19¼"
- Capacity: 5,453 cu. in.

List \$899.65

\$569⁹⁵



99107SB

7 Drawer Top Chest Marquis Series

- 41½" x 18½" x 23¾"
- Capacity: 10,950 cu. in.

List \$1,937.63

\$1,227⁹⁵



99213SB

13 Drawer Roller Cabinet Marquis Series

- 42" x 19" x 40"
- Capacity: 13,677 cu. in.

List \$3,143.81

\$1,991⁹⁵



99509SB

9 Drawer Roller Cabinet - Marquis Series

- 26½" x 18" x 39⅞"
- Capacity: 9,157 cu. in.

List \$1,302.44

\$824⁹⁵



Marquis Series Toolbox Features:

- Safety latch system prevents drawers from accidentally opening.
- Heavy-duty roller bearing slides allow heavily loaded drawers to open and close with ease.
- Industrial black wrinkle finish offers superior scratch and fade resistance.
- Drawer liners included.
- Heavy gauge steel construction for greater load ratings & storage capacities.
- Premium quality casters with greater load ratings allow easier movement on all surfaces.
- Oval handles on roller cabinets allow comfortable gripping and maneuvering.
- Heavy-duty lifting handles with 90° stop for easy lifting of top chests.
- Gas shocks assist in opening and closing lids on top chests (41½" & 53⅞" models only).

Is it curable?



Prostate Cancer
Canada

Chances of survival increase greatly if detected and treated in its earliest stages. Early detection is key.



TU9
9 Piece SAE Combination Wrench Set

- 3/8" - 1"
- 12 Pt., Mirror chrome finish
- Includes gripper organizer.

List \$364.60
\$234⁹⁵

MC215
15 Piece Metric Combination Wrench Set

- 10mm - 24mm
- 12 Pt., Mirror chrome finish
- Includes gripper organizer

List \$615.93
\$281⁹⁵



MB6
6 Piece Metric Box End Wrench Set

- 8mm x 9mm to 20mm x 22mm
- 12 Pt., Mirror chrome finish
- Includes gripper organizer.

List \$205.87
\$111⁹⁵



63809
9 Piece SAE Stubby Combination Wrench Set

- 1/4" - 3/4"
- 12 Pt., Mirror chrome finish.
- Includes gripper organizer.

List \$247.58
\$141⁹⁵



FLM55
5 Piece Metric Flare Nut Wrench Set

- 6 Pt
- 9 x 11mm-16 x 18mm

List \$195.83
\$104⁹⁵



FL3S
3 Piece SAE Flare Nut Wrench Set

- 6 Pt
- 3/8" x 7/16", 1/2" x 9/16", 5/8" x 11/16"

List \$106.25
\$54⁹⁵



64811
11 Piece Metric Stubby Combination Wrench Set

- 9 - 19mm
- 12 Pt., Mirror chrome finish.
- Includes gripper organizer.

List \$335.51
\$214⁹⁵

Gray Ratcheting Wrenches

- Stainless steel construction.
- 12 Point, ratcheting heads allow for faster removal and installation of fasteners.
- Ratcheting function allows for fine and precise fastener adjustments.



65908
8 Piece 1/2" Dr. SAE Flare Nut Crowfoot Wrench Set

- 13/16" - 1 1/4"
- Ideal where a traditional wrench or ratchet cannot reach.
- Precision machined for a tight and secure fit.
- Mirror chrome finish for maximum resistance against corrosion.

List \$353.13
\$227⁹⁵



59711A
11 Piece Multigear™ Combination Metric Fixed Head Ratcheting Wrench Set

- 8mm - 19mm
- 12 Point
- Ratcheting heads allow for faster removal and installation of fasteners.
- 72-tooth design allows for fine and precise fastener adjustments.
- Stainless steel construction.

List \$432.54
\$278⁹⁵

59708A
8 Piece Multigear™ Combination Fixed Head Ratcheting Wrench Set

- 5/16" - 3/4"
- 12 Point
- Ratcheting heads allow for faster removal and installation of fasteners.
- 72-tooth design allows for fine and precise fastener adjustments.
- Stainless steel construction.

List \$308.64
\$198⁹⁵





(MFR250HD shown)



Includes 41.5" extension

(MFR1000HD)

Heavy-Duty Micro Adjustable Torque Wrenches

	Drive	Imperial Range	Imperial Incr.	Newton Meter Range	Newton Meter Incr.	Head Style	Accuracy	List	
MIR250HD	3/8"	30-250 in./lbs	1.0	4.0 - 27.7 Nm	0.12	Fixed-head	± 3% CW ± 4% CCW	\$383.11	\$191⁹⁵
MFR80FL	3/8"	10-80 ft./lbs.	0.5	N/A	N/A	Flex-head	± 4% CW ± 6% CCW	\$472.82	\$236⁹⁵
MFR250HD	1/2"	30-250 ft./lbs.	1.0	47 - 332 Nm	1.40	Fixed-head	± 3% CW ± 4% CCW	\$519.96	\$258⁹⁵
MFR600HD	3/4"	100-600 ft./lbs.	5.0	169 - 779 Nm	6.80	Fixed-head	± 3% CW ± 4% CCW	\$1,540.89	\$769⁹⁵
MFR1000HD	1"	200 - 1,000 ft. lbs.	5	271 - 1,355 Nm	6.8	Fixed-head	± 3% CW ± 4% CCW	\$2,696.15	\$1,829⁹⁵
MF2000	1"	300 - 2,000 ft. lbs.	10	406 - 2,711 Nm	13.5	Fixed-head	± 3% CW ± 4% CCW	\$6,419.37	\$4,356⁹⁵

Features:

- Easy-to-read scales.
- Rugged metal knurled handles.
- Quick release button for faster socket retention and removal.
- Meet or exceed ASME B107.14-2004, ISO 6789 standards
- Individually serialized with matching factory certificate of calibration traceable to N.I.S.T.
- Accuracy is from 20% to 100% of full scale
- Fast, accurate and easy to set in any industrial workplace
- All models have a positive lock with pull down locking ring
- Include plastic storage case.



Adjustable Wrenches - Black Oxide Finish

	Overall Length	Maximum Opening	List	
65315B	15"	1.87"	\$108.57	\$69⁹⁵
65318B	18"	2.30"	\$166.14	\$106⁹⁵
65324B	24"	2.75"	\$303.32	\$194⁹⁵



Heavy-duty Pipe Wrenches

- Industrial I-Beam forged construction
- Jaw opening (size) is conveniently indicated on moving jaw
- Floating hook jaw for fast ratcheting function
- Meets ANSI standards

	Length	Max. Capacity	List	
GSP8	8"	1"	\$36.34	\$19⁹⁵
GSP10	10"	1½"	\$48.62	\$27⁹⁵
GSP12	12"	2"	\$59.67	\$34⁹⁵
GSP14	14"	2"	\$67.40	\$38⁹⁵
GSP18	18"	2½"	\$95.03	\$54⁹⁵
GSP24	24"	3"	\$152.49	\$87⁹⁵
GSP36	36"	5"	\$322.65	\$184⁹⁵

AW812S

2 Piece Industrial Adjustable Wrench Set

- 8" & 12"
 - Matte finish
 - Measurement scale on head
- List \$120.36
\$68⁹⁵



68913XL

13 Piece SAE Extra Long Arm Ball Hex Key Wrench Set

- 0.05" - 3/8"
- List \$38.38
\$24⁹⁵

Up to 33% more torque than ordinary hex keys.



68909XL

9 Piece Metric Extra Long Arm Ball Hex Key Wrench Set

- 1.5mm - 10mm
- List \$31.92
\$19⁹⁵

Up to 33% more torque than ordinary hex keys.



Am I too young to worry?



Prostate Cancer Canada encourages that all men over the age of 40, as part of their annual checkup, to initiate a conversation with their doctor about early detection of prostate cancer.



210
Heavy Duty Retractable Trimming Knife

- Automatic blade loading.
- Roller spring system secures blade in place and prevents its movement.
- Magnet used to fasten the blade.
- Ergonomic design with rubber grip.
- 2 spare blades in the internal blade compartment.
- 7¾" Length.

List \$32.10

\$1995

NEW



205
Retractable Trimming Knife

- Lightweight zinc-alloy die cast body.
- Thumb stop for more power and control.
- 2 spare blades in the internal blade compartment.
- Ergonomic design.
- 6½" Length.

List \$11.10

\$795

NEW



208
Heavy Duty Snap-off Blade Knife

- Automatic blade loading.
- Break button for securing the blade in desired position.
- Ergonomic design with rubber grip.
- 2 spare blades in the internal blade compartment.
- 6½" Length.

List \$29.10

\$1895

NEW



86980
8 Piece Precision Screwdriver Set

- Phillips® No. 00, 0, 1
- Slotted 5/64", 3/32", 11/64", 9/64", 5/32"
- Rotating end cap for constant finger pressure when driving screws
- Cushioned non-slip handle

List \$87.34

\$4695



SCD12
12 Piece Slotted Screwdriver Set

- Slotted 8¼" to 15½" long
- Slotted stubby 3½"
- Screw starter 5"
- Pocket clip type screwdriver 4¾"

List \$217.46

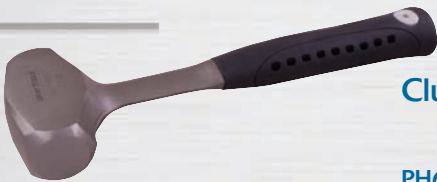
\$13995



Plain Trolleys

	Rated Capacity (tons)	Standard I-Beam Min (in) Max (in)	List	
PT-0.5	0.5	4.92 x 2.95 x 0.22 9.84 x 4.92 x 0.30	\$215.20	\$12295
PT-1	1.0	4.92 x 2.95 x 0.22 9.84 x 4.92 x 0.30	\$282.41	\$16195
PT-2	2.0	7.09 x 3.94 x 0.24 13.78 x 5.91 x 0.30	\$471.17	\$26995
PT-3	3.0	7.87 x 3.94 x 0.28 13.78 x 5.91 x 0.35	\$727.45	\$41595

- Fully adjustable to suit most beam sizes. Easily and quickly, change the number of spacers to match the required width.
- Rugged steel frames.
- Integrated safety lugs offer additional protection from accidental falling of trolley.
- CE certified and compliant with ASME 30.11 specifications.



Club Hammers

	Head Weight	Overall Length	List	
PH60S	2½ lbs	11"	\$56.55	\$3695
PH61S	4 lbs	11"	\$65.05	\$4195

- Forged one piece construction



Rubber Mallet

	Head Diameter	Overall Length	List	
PH30	2½"	16½"	\$58.45	\$3795



24 oz. Strike Pro Dead Blow Hammer

	Head Diameter	Overall Length	List	
STPG-24	1¾"	12½"	\$60.94	\$3995

- Non marring and no bounce



Geared Trolleys

	Rated Capacity (tons)	Standard I-Beam Min (in) Max (in)	List	
GT-0.5	0.5	4.92 x 2.95 x 0.22 9.84 x 4.92 x 0.30	\$353.43	\$20195
GT-1	1.0	4.92 x 2.95 x 0.22 9.84 x 4.92 x 0.30	\$561.56	\$31995
GT-2	2.0	7.09 x 3.94 x 0.24 13.78 x 5.91 x 0.35	\$730.92	\$41795
GT-3	3.0	7.87 x 3.94 x 0.28 13.78 x 5.91 x 0.35	\$917.09	\$52495

- Fully adjustable to suit most beam sizes. Easily and quickly, change the number of spacers to match the required width.
- Rugged steel frames.
- Integrated safety lugs offer additional protection from accidental falling of trolley.
- CE certified and compliant with ASME 30.11 specifications.

Tube Cutters

- Ideal for thin walled metal tubes.
- Lightweight yet very durable magnesium body.
- Feeding screw made of steel.
- No tool required for instant wheel change.
- Ergonomic knob.
- Spare cutting wheel in knob.

84169 Tube Cutter

- Cuts tubing 1/4" to 3" O. D.
 - Quick release system for faster operation.
 - 4 rollers for better grip of the metal tube being cut.
 - Removable reamer.
- List \$194.70
\$124⁹⁵



NEW



84172A Pipe Cutter

- Cuts pipes 1/8" to 2" O. D.
 - Ideal for steel tubes.
 - Drop forged steel frame.
 - Innovative spring system provides a clean cut and preserves durability of cutting wheel.
 - Feeding screw made of steel.
- List \$207.53
\$133⁹⁵

NEW

83003S 3 Piece Scraper Set

- 1 1/4" wide blade scraper.
 - 2" wide blade scraper.
 - 6 in 1 painters tool.
 - Comfort grip handles.
 - Metal end caps on handles permit tapping for removal of stubborn materials.
 - Chrome finished for maximum resistance against corrosion.
 - Comfort handles provide a secure grip.
 - Packaged in: plastic tray.
- List \$54.39
\$34⁹⁵



NEW

84125 Tube Cutter

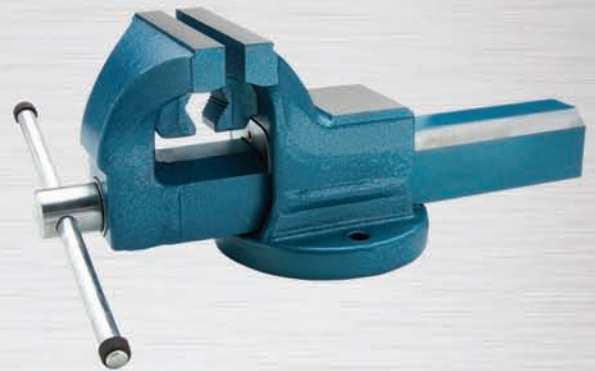
- Cuts tubing 1/8" to 1 1/8" O. D.
 - Ideal for thin walled hard and soft copper, aluminum, brass and plastic tubes.
 - Ideal for use projects with restricted space.
- List \$36.53
\$23⁹⁵



84143 Tube Cutter

- Cuts tubing 1/8" to 1 3/4" O. D.
 - 4 rollers for better grip of the metal tube being cut.
 - Removable reamer.
- List \$99.94
\$64⁹⁵

NEW



Forged Combination Pipe Vises

	Jaw Width	List	
VS150	150mm	\$628.31	\$403⁹⁵
VS200	200mm	\$837.10	\$538⁹⁵

- Equipped with permanent pipe jaws for holding pipes & tubes.
- Heavy duty hardened serrated jaws.
- Optional swivel base available.
- 92,000+ PSI

19 1/2" Dr. Stud Remover, 1/4" to 3/4"

- Overall Length: 2"
 - Drive Size: 1/2"
 - Capacity: 1/4" to 3/4"
 - Removes headless bolts.
- List \$82.39
\$52⁹⁵



CF146 Telescopic Inspection Mirror

- Circular: 2 1/4"
 - Length: 10 - 14"
- List \$19.12
\$12⁹⁵



CF147 Telescopic Inspection Mirror

- Rectangular: 2 1/8" x 3 1/2"
 - Length: 11 1/4" - 15 1/4"
- List \$19.12
\$12⁹⁵

Who's most at risk?



The chance of getting prostate cancer rises quickly after a man reaches age 50, and almost two out of three prostate cancers are found in men over 65. Age is the most important risk factor for prostate cancer.

Gray Pliers

- Precisely machined serrated teeth provide a safe and secure hold of any object.
- Hardened cutting edges for longer life.
- Long length designs are ideal for use in hard to reach applications.
- PVC dipped handles provide a secure and comfortable grip
- Limited Lifetime Warranty.
- Meet or exceed ANSI standards.



Lineman's Pliers with Cutter and Vinyl Grips

	Jaw Length	Overall Length	List	
B210B	1"	6 1/4"	\$49.46	\$31⁹⁵
B212B	1 1/4"	7"	\$53.79	\$34⁹⁵
B214B	1 3/8"	8"	\$58.46	\$37⁹⁵
B218B	1 5/8"	9"	\$67.13	\$43⁹⁵

B5PLS

5 Piece Pliers Set

- 8" Lineman's Plier
 - 8" Needle Nose Plier with Cutter
 - 7 1/4" Diagonal Side Cut Plier
 - 10 1/8" Adjustable Joint Plier
 - 8" Slip Joint Plier
 - Includes foam tray organizer
- List \$228.40

\$146⁹⁵



B141

Wire Cutter/Stripper

- Overall Length: 6"
- Stripper-Cutter No. 22, 24, 26, 28, 30
- AWG .25, .32, .40, .50, .65 mm.
- Spring-loaded reducing user fatigue.
- PVC dipped handles.

List \$27.58

\$17⁹⁵



B123

Crimper, Stripper & Cutter Plier

- 8 1/2" long

List \$56.39

\$36⁹⁵



Locking Pliers with Swivel Pads

	Overall Length	Jaw Opening	List	
224-06	6"	1 15/16"	\$33.43	\$21⁹⁵
224-12	12"	3 1/8"	\$55.24	\$34⁹⁵
224-14	14"	4 7/8"	\$59.45	\$38⁹⁵
224-18	18"	9 7/16"	\$80.79	\$51⁹⁵

- Knurled swivel pads allow non-slip no damage parallel clamping even on tapered surfaces.

NEW



AX-SET6

6 Piece Axial Grip Locking Plier Set

- Includes metallic rack for quick access and compact storage.
- Designed to clamp two flanged, lapped or adjacent joints.
- Ideal for the auto body technician, steel fabricator, sheet metal workers.
- Epoxy resin coated for 10 times more corrosion resistance vs nickel.
- Superior resistance to welding spatter.
- Drop forged jaws ensure long-term durability.
- Made in Spain.

List \$361.58

\$244⁹⁵

B111

12 Piece Convertible Snap Ring Plier Set

- Includes blow molded case
- Convertible internal/external fixed tips.
- 0°, 45° & 90° tip designs.

List \$484.02

\$297⁹⁵

535

Hand Seamer

- Jaw width 3 1/2"
- Throat depth 1"
- 7 3/4" long
- Drop forged construction delivers excellent durability and strength.

List \$86.22

\$49⁹⁵





P5013A
2 Piece Bearing Separator Set
 Set includes:
 P501 - 0 - 2 1/4" capacity
 P503 - 0 - 4 1/4" capacity
 List \$249.61
\$159⁹⁵



PO10T
Push Puller Set
 • Includes: 10 ton capacity push puller,
 Gear puller: spread 1 1/2" to 4 1/4",
 Large puller: spread 2" to 7 3/4".
 • Includes blow molded
 carrying case
 List \$597.81
\$384⁹⁵



P309
Timing Gear Puller
 • Screw Size: 3/8" - 16 x 5 1/2" long
 • Spread Range: 1 1/2" to 4 1/4"
 • Block Opening: 7/16"
 • Block Dimensions: 4 7/8" x 1 3/16"
 *Use for servicing crankshaft pulleys
 & timing gears
 List \$69.27
\$44⁹⁵



PO14
Adjustable 2/3 Jaw Puller
 • Capacity: 13 ton
 • Reach: 11"
 • Maximum spread: 14"
 List \$532.25
\$342⁹⁵



PO13A
Reversible 2/3 Jaw Puller
 • Capacity: 5 ton
 • Reach: 5 1/2"
 • Maximum spread: 7"
 • Reversible jaws permit external
 or internal pulling.
 List \$170.16
\$109⁹⁵



89656
8 Piece I.S.O. Metric Bubble Flaring Tool Set
 Set includes:
 4 dies, yoke assembly, bar assembly,
 reamer and wrench.
 List \$155.24
\$89⁹⁵



IMD208K
6 Piece Impact Driver & Attachment Set
 • 3/8" square drive impact driver.
 • 5/16" hex bit adapter.
 • No. 2 & 3 Phillips®.
 • 5/16" & 3/8" Slotted 1 1/8" long.
 List \$119.41
\$61⁹⁵

NEW
CERTIFIED
TO -40°C



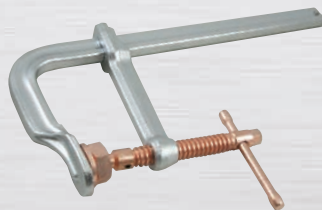
Alloy Steel Eye Bolts

	Thread Size	Shank Length	Overall Length	Rated Capacity lbs.	List	
AS12	3/8 - 16"	1 1/4"	3.28"	1,480	\$47.53	\$33⁹⁵
AS16	1/2 - 13"	1 1/2"	4"	2,700	\$57.33	\$39⁹⁵
AS20	5/8 - 11"	1 3/4"	4.75"	4,300	\$81.13	\$57⁹⁵
AS24	3/4 - 10"	2"	5.28"	6,400	\$104.93	\$74⁹⁵
AS28	7/8 - 9"	2 1/4"	5.97"	8,800	\$148.33	\$105⁹⁵
AS32	1 - 8"	2 1/2"	6.66"	11,600	\$191.73	\$136⁹⁵
AS40	1 1/4 - 7"	3"	8.22"	18,400	\$240.73	\$171⁹⁵
AS48	1 1/2 - 6"	3 1/2"	9.47"	26,600	\$349.93	\$249⁹⁵
AS64	2 - 4 1/2"	4"	11.88"	47,600	\$645.33	\$460⁹⁵

- For cold weather working environments.
- Certified for use down to -40°C/-40°F.
- Stamped with the letter "A" to identify them as low temperature specific.
- Proof tested in accordance with ASTM F 541 and Federal Spec. ANSI B18.15.

L-Clamps

Capacity	Proof Test (lbs)	List	
L408C 0-8"	2,645	\$84.84	\$54⁹⁵
L412C 0-12"	2,645	\$101.26	\$64⁹⁵
L416C 0-16"	2,645	\$113.44	\$72⁹⁵
L420C 0-20"	2,645	\$135.99	\$87⁹⁵



- Swivel pads
- Copper plated screw and pad resist welding splatter
- I-beam design for maximum strength.

What should I do now?



While there is, no single cause of prostate cancer taking the following actions can help; take charge of your health, eat a healthy diet, stay at a healthy weight and have an annual physical.



For more information visit
www.prostatecancer.ca
or call 1.888.255.0333



92440
40 Piece Metric Carbon Tap And Die Set
• Alloy steel
List \$232.88
\$143⁹⁵



91942
42 Piece Rethreading Kit
• 19 taps, 21 dies of NC, NF & metric sizes including 2 thread files.
List \$192.85
\$129⁹⁵

C10PS

10 Piece Punch Set

• Taper punch 3/32", 1/8", 5/32", 3/16", 1/4"
• Pin punch 1/8", 5/32", 3/32", 3/16", 1/4"
• In canvas roll
List \$126.59
\$84⁹⁵



S35P
5 Piece Screw Extractor Set
• Removes screw sizes: 1/8" to 1 1/16", 3mm - 18mm
• Left hand spiral and tapered flute.
• Aggressive spiral design removes even stubborn broken bolts.
• Packaged in: vinyl pouch.
List \$42.13
\$24⁹⁵



C2BDS
2 Piece Brass Drift Punch Set
• 1/2" x 7"
• 3/4" x 8"
List \$66.70
\$41⁹⁵

C46LR

13 Piece Punch & Chisel Set

• Flat Chisel: 1/2", 5/8", 3/4", 7/8", 1"
• Cape Chisel: 1/4"
• Diamond Point Chisel: 1/4"
• Long Taper Punch: 5/32", 3/16"
• Pin Punch: 1/8", 3/16", 1/4"
• Centre Punch: 3/8"
• In canvas roll
List \$221.36
\$149⁹⁵



WSB60

60" Wrecking Bar

• Hardened leverage end • Nickel plated finish • 1" Shank size
List \$173.44
\$118⁹⁵



SE100C

10 Piece Screw Extractor Set

• 10 extractors 1/8" to 1 1/16"
• Straight, tapered flutes provide a secure and firm grip
List \$276.80
\$177⁹⁵



Pry Bars with Screwdriver Handle

	Shank Size	Blade Length	List		Shank Size	Blade Length	List		
73408	3/8"	8"	\$33.73	\$23⁹⁵	73424	1/2"	24"	\$52.98	\$36⁹⁵
73413	3/8"	13"	\$41.88	\$28⁹⁵	73430	1/2"	30"	\$79.78	\$51⁹⁵
73418	1/2"	18"	\$46.06	\$31⁹⁵	73436	1/2"	36"	\$88.64	\$56⁹⁵

