

SOWA[®]

METALWORKING SOLUTIONS



Canadians Supporting Canadians



Pricing valid from October 1 to December 31, 2019

Introducing The New Line Of

2019 Fall Flyer



High Performance Live Centres

Each GS Live Centre is manufactured to the same exacting standards that metalworking professionals have come to expect from GS brand tooling.

Each GS Live Centre uses either a 3, 4, or the incredible 5 bearing system. Each bearing system has been individually and specifically designed for the applications in which that live centre is meant to be used. This specificity of design provides superior performance and tool life across the entire GS line of centres.

An additional special coating process is applied to the lip seal contact area. This coating offers a higher sealing ability and reduces rotational friction, both contributing to longer tool life.



311013



Download your copy of the introductory flyer today.



Here is a sample of the new line

CNC HIGH SPEED LIVE CENTRES - STANDARD POINT

FEATURES

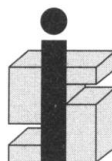
- Accuracy guaranteed to 0.003mm TIR (0.0001")
- Excellent for CNC and conventional machines
- Heat treated point to HRC 60±2
- High performance lip seal and deflected shaft design protects bearing space from ingress by dust and coolant
- **Quad Bearing System:** a double row angular contact bearing, a radial ball bearing, and a rear needle roller bearing combine to provide excellent rigidity and high precision point concentricity
- Heat treated drop-forged body (HRC 50±2) for extra strength, rigidity, and long life
- Shaft borehole for easy dismounting

MT	Workpiece Weight	Max RPM	Code No.	SALE \$
2	500 kg	5,000	311-011	412.02
3	500 kg	5,000	311-012	412.02
4	800 kg	3,800	311-013	536.48
5	2,000 kg	3,000	311-014	739.34

Distributed by:



Industrial Steel & Supply Co. Ltd.



Société d'acier et d'outillage industriels Ltée



9750, rue Meilleur, Montréal (Québec) H3L 3J5

Tél. : (514) 389-7891 • 1 800 361-8244 • Fax : (514) 389-1121

www.industrial.ca • info@industrial.ca



PRECISION TOOLS

Outside Micrometers

- Deluxe heat insulated forged steel frame up to 4"
- Chrome clad
- Complete with standards (2" and up)
- Carbide faces
- Ratchet stop for exact and repetitive reading
- Fitted case



	Range	Graduation	Code No.	SALE \$
Inch	0-1"	0.0001"	200-570	31.15
	1-2"	0.0001"	200-572	34.09
	2-3"	0.0001"	200-574	37.80
	3-4"	0.0001"	200-576	41.51
	4-5"	0.0001"	200-577	48.16
	5-6"	0.0001"	200-579	56.28
	6-7"	0.0001"	200-082	65.87
	7-8"	0.0001"	200-084	73.99
	8-9"	0.0001"	200-086	81.41
	9-10"	0.0001"	200-088	89.67
	11-12"	0.0001"	200-092	105.14
Metric	0-25mm	0.01mm	201-002	31.15
	25-50mm	0.01mm	201-004	34.09
	50-75mm	0.01mm	201-006	37.80
	75-100mm	0.01mm	201-008	41.51
	100-125mm	0.01mm	201-010	48.16
	150-175mm	0.01mm	201-013	78.47
	175-200mm	0.01mm	201-014	90.30
	200-225mm	0.01mm	201-015	62.30
250-275mm	0.01mm	201-017	74.20	

Outside Micrometer Sets

- Ratchet and lock nut
- Complete with standards (2" and up)
- Carbide faces
- Fitted wood case



	Range	Graduation	Code No.	SALE \$
Inch	0-3"	0.0001"	200-578	102.90
	0-4"	0.0001"	200-094	144.34
	0-6"	0.0001"	200-580	248.50
	6-12"	0.0001"	200-096	512.33
	0-12"	0.0001"	200-098	777.07
Metric	0-75mm	0.01mm	201-020	102.90
	0-150mm	0.01mm	201-022	248.50

Micrometer Stand



Code No.: 200-500 SALE \$ **24.78**

Large Display Digital Caliper

- Features:
- Large face for easy reading
- Inside, outside, step and depth measurements
- Inch/Metric conversion
- Auto on, auto shutoff
- Zero button



Range	Resolution	Code No.	SALE \$
0-12"/300mm	0.0005"/0.01mm	200-542	132.86

Coolant Proof Dial Indicator

- Water Resistant
- Reverse counter
- Stainless steel components
- Rotating bezel with clamp
- Lugback (1/4" hole)
- Interchangeable point
- Conforms to AGD 2 standards



Travel Range	Dial Reading	Grad.	Dial Colour	Code No.	SALE \$
0-0.4"	0-50	0.0005"	White	200-075	70.63

Bevel Edge Square

- Accuracy Class H
- Hardened steel squares
- Accurate right angles both inside and outside
- Blades are beveled on both edges of each side
- Made from a single piece of fully seasoned tool steel
- Beams and blades are ground and accurately lapped for straightness and parallelism



Blade Size	Beam	Code No.	SALE \$
7-7/8"	5"	230-360	45.92

Machinist Workshop Squares

Ideal for everyday workshop use, these are also suitable for woodworking applications.

- Hardened blades
- Not graduated
- Beams and blades are ground and accurately lapped for straightness and parallelism



Blade Size	Beam	Squareness	Code No.	SALE \$
3"	2-3/8"	0.0019"	230-305	9.94
6"	4"	0.0028"	230-315	14.35

INVENTORY REDUCTION



Twin Column Digital Height Gauges

- Rigid twin column structure
- 6 digit LCD display and minus sign
- Functions include: Zero setting, inch/mm conversion, data hold, plus/minus processing
- Large size feed wheel
- Lock-on measuring slider
- Battery furnished
- Carbide tipped scriber
- Resolution 0.001"/0.01mm



Range	Accuracy	Code No.	SALE \$
12"/300mm	±0.04mm	200-675	465.85
18"/450mm	±0.05mm	200-680	598.64
24"/600mm	±0.05mm	200-690	633.85
Replacement Battery		200-644	3.78

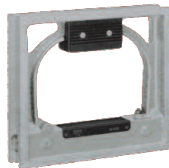
Super Mag

- A universal magnetic base that will save time and improve accuracy
- Strong magnet holding power
- Zinc die cast housing
- 5 different locations for mounting accessories:
 - 3 positions 1/4-20 for lug mounts, 1 tapped hole 10-32, 1 reamed hole 3/8"
- Size 4-1/2" x 1" x 1-1/4"



Description	Code No.	SALE \$
Super Mag	200-880	11.83

Precision Square Levels



Model	Dimensions (mm)	Weight (kg)	Code No.	SALE \$
VSL-200A	200x200x40	3.8	230-370	306.25
VSL-300A	250x250x40	5.8	230-380	450.24

Radius Gauge Sets

Satin Finish Stainless Steel
No. L300 Series



Model No.	Specifications	Code No.	SALE \$
L 300 CX	1/64-17/64 x 64ths 9/32-1/2 x 32nds	225-005	169.40
L 300 MX	0.5mm-13mm x 0.5mm	225-010	304.43
	1/64-17/64 x 64ths 9/32-1/2 x 32nd	230-015	45.50

Precision Steel Pin Gauge Sets

- Hardness: heat treated to a hardness of 60-62 Rockwell C Drill Rod
- All members 2" long, centerless lapped
- Size Electro etched in each piece
- Finish: each gauge inspected and has 10 micron finish or better
- Deluxe box with insert
- Tolerance: Minus -0.0002"/+0.0000"



Gauge Set No.	Range	No. of Gauges	Minus Code No.	SALE \$
P-0	0.011-0.060"	50	255-145	49.00
P-1	0.061-0.250"	190	255-040	106.19
P-2	0.251-0.500"	250	255-045	221.20
P-3	0.501-0.625"	125	255-150	212.31
P-4	0.626-0.750"	125	255-155	251.16
P-5	0.751-0.832"	82	255-160	251.16
P-6	0.833-0.916"	84	255-165	313.88
P-7	0.917-1.000"	84	255-170	333.41

Digital Scale Unit



Range	Accuracy	Code No.	SALE \$
0-150 mm/0-6"	±0.03mm	201-050	64.05

STM Magnetic Bases



Standard Model BA-1 Code No.	SALE \$	Fine Adj. Model BA-1F Code No.	SALE \$	Flex Stem Model BA-1X Code No.	SALE \$
Made In Taiwan					
225-001	81.48	225-002	87.43	225-003	100.31
Made In China					
225-705	23.31	225-700	23.87	-	-

Small Hole Gauge Set

- Set of 4 gauges, 0.125" – 0.500"



Sizes Consisting of:	Code No.	SALE \$
Set of 4 gauges 0.125" – 0.500"	200-713	22.82

CUTTING TOOLS

Plain Bearing Drill Chucks



GS Plain Bearing Chucks are specially designed for stationary drilling, turning, milling, and woodworking machines.

- Sleeve design eliminates the possibility of tooth breakage
- Hardened jaws and body help to avoid wear and lengthen the life of the chuck
- Each chuck supplied with a key



Chuck Model	Capacity	Mount	Code No.	SALE \$
13GH	3/64-1/2"	JT6	536-516	28.70
16GH	3/64-5/8"	JT3	536-520	38.43

Drill Chuck Arbors



Taper	Jacobs Taper	Code No.	SALE \$
MT2	3	326-904	7.14
MT2	6	326-906	7.14
MT3	3	326-912	8.40
MT3	4	326-914	9.94
MT3	6	326-916	8.47
MT4	3	326-920	10.99
MT4	4	326-922	11.13
MT4	6	326-924	10.99
MT5	3	326-928	21.56
MT5	6	326-930	21.56
R8	3	326-934	14.07
R8	6	326-936	14.07
1/2"	6	326-942	6.02
5/8"	3	326-946	6.37
3/4"	3	326-948	6.65
3/4"	6	326-950	7.63

Super Heavy Duty Ball Bearing Drill Chucks



GS Ball Bearing Chucks are specially designed for HEAVY DUTY drilling applications on production drilling machines, jig borers, milling machines, lathes and radials. The ideal choice for those jobs that require close tolerance drilling. The ball thrust bearing reduces friction in the chuck's closing mechanism, so the operator can apply more gripping power on the twist drill shank.

- High precision, premium tolerance
- The jaws feature a TIN coated surface treatment to assure durability.



Chuck Model	Capacity	Mount	Code No.	SALE \$
13BXH	3/64-1/2"	JT6	536-500	44.59
16BXH	3/64-5/8"	JT3	536-502	55.09
19BXH	3/64-3/4"	JT4	536-504	106.89

29pc Black/Gold Drill Set



- 1/16" - 1/2" by 64ths

Code No.: 105-380

Reg. List: \$103.60

\$72.52

Premium Drill Sharpening Machines

Model DM213

Code No. 326-130

List Price \$1,940.00

Sale Price \$1,358.00

Drill Diameter: Ø2mm - Ø13mm
 Point Angle: 85° ~ 140°
 Power Supply: AC110 / AC220 50/60HZ
 Motor: 90W
 R.P.M: 6000RPM
 Weight: 10 kg



**DM213
FAST DRILL RE-SHARPENING MACHINE**

Patented Features

- Double-bearing grinding unit (reduces wear).
- Drill tightened design with bearing device.
- Adjustable trimming angle.

Standard Accessories

- ER20 Collets, 2.5mm-13mm (12pcs).
- CBN Dia. wheel #200x1pc (for HSS drill).
- 3mm and 4mm Hexagon (Hex.) wrench x 1 pc each.

Model DM1226

Code No. 326-134

List Price \$4,414.40

Sale Price \$3,090.08

Drill Diameter: Ø8mm - Ø30mm
 Point Angle: 85° ~ 140°
 Power Supply: AC110 / AC220 50/60HZ
 Motor: 450W
 R.P.M: 4000RPM
 Weight: 25 kg



**DM1226
FAST DRILL RE-SHARPENING MACHINE**

Patented Features

- Double-bearing grinding unit (reduces wear).
- Drill tightened design with bearing device.
- Adjustable trimming angle.

Standard Accessories

- ER40 Collets, 12mm-26mm (15pcs).
- CBN Dia. wheel #200x1pc (for HSS drill).
- 3mm and 4mm Hexagon (Hex.) wrench x 1 pc each.

CAT TAPER START UP PACKAGES

- CAT40 Certified Balanced to 30,000 RPM
- 100% Forged Construction
- Precision Ground Throughout
- DIN Coolant Thru The Flange - Standard
- AT3 Taper Accuracy or better



CAT40 PACKAGE # 500-344

\$2,472.00

Code No.	Qty.	Description	
531002	1 pc.	CAT40 1/4 x 2.50"	End Mill Holder
531014	1 pc.	CAT40 3/8 x 2.50"	End Mill Holder
531026	1 pc.	CAT40 1/2 x 2.50"	End Mill Holder
531034	1 pc.	CAT40 5/8 x 3.00"	End Mill Holder
531042	1 pc.	CAT40 3/4 x 3.00"	End Mill Holder
531056	1 pc.	CAT40 1" x 4.00"	End Mill Holder
531408	2 pcs.	CAT40 ER16 x 3.5"	Collet Chucks
531421	2 pcs.	CAT40 ER32 x 2.5"	Collet Chucks
337440	1 pc.	ER16 1/16 - 3/8"	11pc Collet Set
337444	1 pc.	ER32 1/8 - 3/4"	21pc Collet Set
531482	1 pc.	CAT40 1/2" Keyless	Drill Chuck
326985	1 pc.	4 trays = 28 inserts	Trolley
327275M	1 pc.	6" Plain Base	Machine Vise

CAT40 PACKAGE # 500-345

\$1,867.00

Code No.	Qty.	Description	
531002	1 pc.	CAT40 1/4 x 2.50"	End Mill Holder
531014	1 pc.	CAT40 3/8 x 2.50"	End Mill Holder
531026	1 pc.	CAT40 1/2 x 2.50"	End Mill Holder
531034	1 pc.	CAT40 5/8 x 3.00"	End Mill Holder
531042	1 pc.	CAT40 3/4 x 3.00"	End Mill Holder
531056	1 pc.	CAT40 1 x 4.00"	End Mill Holder
531408	2 pcs.	CAT40 ER16 x 3.5"	Collet Chucks
531421	2 pcs.	CAT40 ER32 x 2.5"	Collet Chucks
337440	1 pc.	ER16 1/16 - 3/8"	11pc Collet Set
337444	1 pc.	ER32 1/8 - 3/4"	21pc Collet Set
531482	1 pc.	CAT40 1/2" Keyless	Drill Chuck
326985	1 pc.	4 trays = 28 inserts	Trolley

VICES



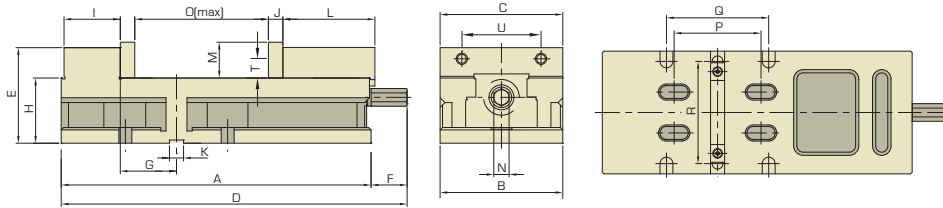
6" VERSATILE VISE

New Product

- High accuracy vise for single station CNC centres specially designed to prevent workpiece lift
- 2 operating positions for Vertical Machine Centres: Upright & Lay Down
1 operating position for Horizontal Machine Centres: Horizontal
- Bed height: 81mm ±0.012mm (3.189" ±0.0005")
- Material: FCD-60

Code#: 382-620

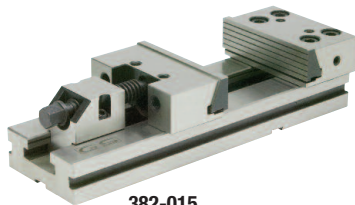
\$1,130.00



	A	B	C	D	E	F	G	H	I	J	K	L	M	N	O	P	Q	R	T	U	Wt.
GSV60	385	152.45	151	431.8	118.7	46.8	69.84	81	69.9	18	18	114.3	44.5	19	163	107.95	127	127	23.8	98.4	31kg

6X8" MODULAR VISE + TYPE 25 COLLET CHUCK SET

- Features/Benefits:
- High accuracy
 - Unlimited clamping range
 - High quality alloy steel
 - High clamping pressure
 - No jaw lift
 - All vises are matched
 - Jaw Width: 6"
 - Opening: 8"
 - Jaw Height: 2"



382-015
List: \$1206.10

Set includes:
1 chuck, 1 wrench, 1 each collet and fitted case

Type 25 - ISA-40

- 1/8", 3/16", 1/4", 5/16", 3/8", 1/2", 5/8", 3/4", 7/8", 1"



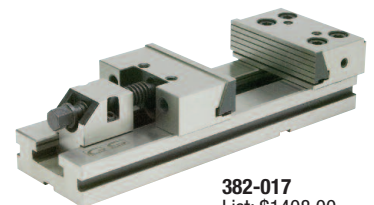
334-605
List: \$563.50

Code No.: 500-347

\$1,260.00

6X12" MODULAR VISE + 5/8" CLAMPING KIT

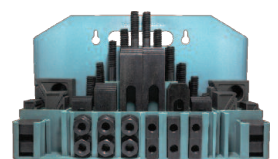
- Features/Benefits:
- High accuracy
 - Unlimited clamping range
 - High quality alloy steel
 - High clamping pressure
 - No jaw lift
 - All vises are matched
 - Jaw Width: 6"
 - Opening: 12"
 - Jaw Height: 1.97"



382-017
List: \$1408.00

Each set contains

- 24 1/2-13 Studs 4 each 3, 4, 5, 6, 7, 8" lengths
- 6 T-slot nuts
- 6 Flange nuts
- 4 Coupling nuts
- 6 1" Thick Step blocks
- 6 Serrated end clamps
- 1 T-slot cleaner
- 1 Metal holder



333-550
List: \$197.90

Code No.: 500-348

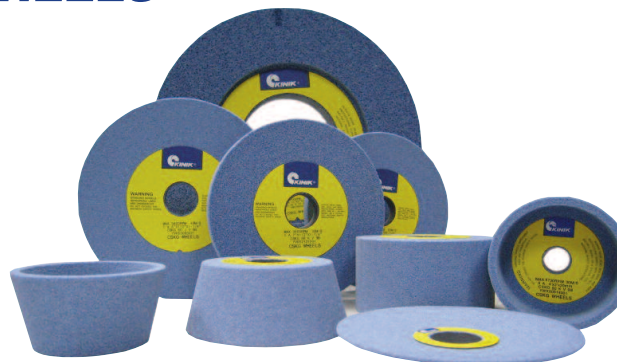
\$1,326.00

ABRASIVES



CERAMIC GRINDING WHEELS

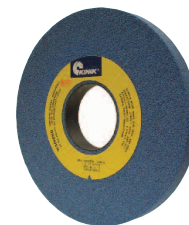
- **HIGH PERFORMANCE CERAMIC ALUMINUM OXIDE**
- **UP TO 5X LONGER LIFE THAN WHITE ALUMINUM OXIDE WHEELS**
- **SUPERIOR STOCK REMOVAL RATES, LONG WHEEL LIFE REDUCING GRINDING COSTS**
- **MAXIMUM RESULTS FOR:**
 - TOOL SHARPENING**
HSS & TOOL STEEL <68 HRC.
 - SURFACE GRINDING**
HSS & TOOL STEEL <68 HRC, 300 & 400 SERIES STAINLESS STEEL, CAST IRON: DUCTILE & GRAY, NONFERROUS ALLOYS



Kinik Ceramic Surface Grinding Wheels

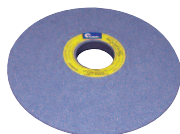
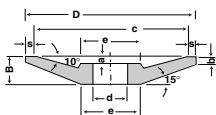
Peripheral Surface Grinding

Surface grinding with straight or recessed wheels on machines with a rotating or reciprocating table results in a larger contact area than in cylindrical grinding. Therefore it is necessary to use softer grade wheels, particularly when large diameter and/or wide wheels are used. When grinding a large number of components, the grinding is not continuous. In this case the components tend to dress the wheel, so a harder grade wheel should be used.



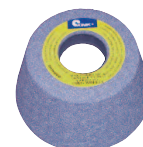
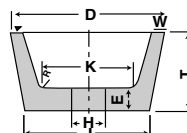
Dimensions	Structure CSKG 46H	SALE \$	Structure CSKG 46K	SALE \$	Structure CSKG 60K	SALE \$	Structure CSKG 80K	SALE \$
6x1/4x1-1/4			635-040	19.04	635-041	18.13	635-042	19.04
6x1/2x1-1/4			635-044	21.49			635-052	21.49
7x1/4x1-1/4					635-048	25.83	635-049	25.83
7x1/2x1-1/4			635-055	28.07	635-050	28.07		
8x1/4x1-1/4			635-057	30.52	635-061	30.52	635-062	30.52
12x1x5			635-079	110.18				
12x1-1/2x5			635-082	138.67				
14x1x5			635-083	138.67	635-084	138.67	635-109	138.67
14x1-1/2x5			635-086	177.10	635-087	177.10		
14x2x5			635-110	228.97	635-111	228.97		
RECESSED 2A BOTH SIDES								
12x2x3 2A 6x3/8					635-107	189.70		
12x2x5 2A 7-1/4x1/2			635-108	177.10				
14x2x5 2A 8x3/8			635-088	239.61	635-089	239.61		
14x2x5 2A 8x3/8 H	635-070	248.64						

Kinik Ceramic Shape B Saucer Type Grinding Wheel



D	B	d	a	b	c	e	s	CSKG60K Code No.	SALE \$
6	5/8	1-1/4	1/4	1/8	5-3/8	2	5/16	635-095	51.94

Kinik Ceramic Shape E Flaring Cup Grinding Wheel



D	T	H	W	E	J	K	CSKG60K Code No.	SALE \$
5	2	1-1/4	8 mm	1/2	4	3	635-090	51.94

Pricing valid from October 1 to December 31, 2019 or while quantities last.

We reserve the right to make changes without notice and accept no liabilities for mistakes and printing errors. All taxes extra.



Sowa Tool & Machine Co. Ltd.
500 Manitou Drive
Kitchener, Ontario
N2C 1L3

Western Canada Branch
9649-49th Ave
Edmonton, AB
T6E 5Z5

Toll Free: 1-800-265-8221
Phone: (519) 748-5750
Fax: (519) 748-9304
sales@sowatool.com
www.sowatool.com

